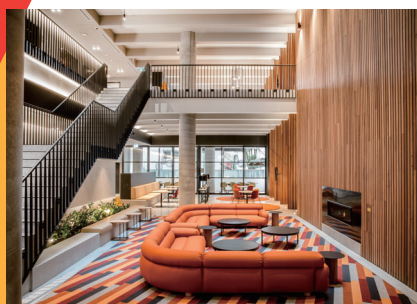


Accommodation
Options

Melbourne Student Residence



Iglu South Yarra

Placement Fee **\$300**

Weekly Fee **\$430**

Cleaning Fee **\$150**

Accommodation fees are charged according to calendar year and 2024 fees may change. Impact will issue an updated offer letter reflecting these changes at our earliest opportunity.

Location

8 Claremont Street
South Yarra VIC 3141

Minimum Stay

5 weeks

Check-in/out

Check-in on Sunday, check-out on Saturday.
(For check-in earlier than Sunday, student will be charged for the whole week. No daily rate available.)

Check-in and Airport Pick-Up bookings not available from
23 Dec 2023 to 6 Jan 2024.

For more information:

homestay@impactenglish.edu.au

www.impactenglish.edu.au

[Facebook.com/ImpactEnglishCollege](https://www.facebook.com/ImpactEnglishCollege)

[Instagram.com/ImpactEnglishCollege](https://www.instagram.com/ImpactEnglishCollege)



CRICOS CODE 02995B

How to get to the college

South Yarra Station is a 2-minute walk from the accommodation. It takes approximately 10 to 15 minutes from South Yarra Station to Southern Cross Station. The college is a short walk from Southern Cross Station. Buses and trams are also available.

Meals

Complimentary weekday breakfast provided by Iglu.

Your room

You will have your own private bedroom in a fully furnished 5 or 6-bedroom apartment. Your bedroom has secure swipe card entry, a private bathroom, a king-size single bed with a reading light, under bed storage, study desk, chair, pin board, built-in wardrobe, bookshelf, storage space, full length mirror and acoustic windows with block-out blinds. The apartment features a shared kitchen, lounge and dining area. All utilities (electricity, water & gas) are included and a linen pack will be provided.

Facilities in the building

Unlimited high-speed WiFi, 24-hour security and support, gym and games area, onsite laundry, in-house reception, study and BBQ areas, cinema room, TV and lounge area, bicycle storage and vending machine.

Terms and conditions

A full refund of the accommodation fee will be given if a booking is cancelled more than 30 days before arrival. No amendments or cancellations can be made within 30 days prior to arrival and after commencement of the stay. Students who choose to leave will not receive a refund for the term they applied for. Students can apply for the minimum stay of 5 weeks and extend their stay. Extension of the stay is subject to availability.

