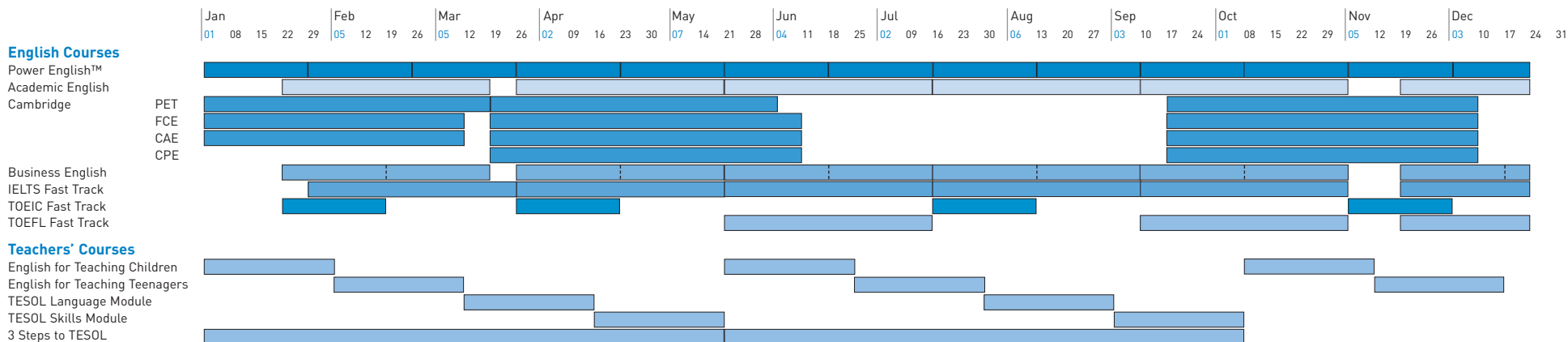


Australian College of English 2007



English Courses

POWER ENGLISH™ (GENERAL ENGLISH)

Start Dates

02 Jan, 29 Jan, 26 Feb, 26 Mar, 23 Apr, 21 May, 18 Jun, 16 Jul, 13 Aug, 10 Sep, 08 Oct, 05 Nov, 03 Dec

Fees

Weeks	Intensive	Part-time*
41+	\$295pw	
31-40	\$305pw	
21-30	\$315pw	
2-20	\$325pw	\$270pw

Hours/week

Intensive	Part-time*
20 (plus 5hrs Self Access)	16 (plus 4hrs Self Access)

ACADEMIC ENGLISH

Start Dates

22 Jan, 26 Mar, 21 May, 16 Jul, 10 Sep, 19 Nov (8 week course)

Fees

Refer to Power English™ Fees

CAMBRIDGE PREPARATION COURSES

Preliminary English Test (PET)

Dates	Exam	Fees
02 Jan – 16 Mar (11 wks)	17 Mar	\$3,685
19 Mar – 01 Jun (11 wks)	01 Jun	\$3,685
17 Sep – 07 Dec (12 wks)	07 Dec	\$4,020

First Certificate in English (FCE)

Dates	Exam	Fees
02 Jan – 09 Mar (10 wks)	10 Mar	\$3,350
19 Mar – 08 Jun (12 wks)	12 Jun	\$4,020
17 Sep – 07 Dec (12 wks)	11 Dec	\$4,020

Certificate in Advanced English (CAE)

Dates	Exam	Fees
02 Jan – 09 Mar (10 wks)	10 Mar	\$3,350
19 Mar – 08 Jun (12 wks)	13 Jun	\$4,020
17 Sep – 07 Dec (12 wks)	12 Dec	\$4,020

Certificate of Proficiency in English (CPE)

Dates	Exam	Fees
19 Mar – 08 Jun (12 wks)	14 Jun	\$4,020
17 Sep – 07 Dec (12 wks)	13 Dec	\$4,020

BUSINESS ENGLISH

Start Dates

22 Jan, 26 Mar, 21 May, 16 Jul, 10 Sep, 19 Nov (8 week course)
19 Feb, 23 Apr, 18 Jun, 13 Aug, 08 Oct, 17 Dec (4 week course /mid-course entry)

Fees

Refer to Power English™ Fees

NOTE: 1. Intermediate → Advanced level
2. Course leads to LCCI (London Chamber of Commerce & Industry) 'English for Business' exam.
3. LCCI Exams take place on the last day of the 8-week course.

IELTS FAST TRACK

Start Dates

21 Jan, 26 Mar, 21 May, 16 Jul, 10 Sep, 19 Nov (8 week course)

Fees

Refer to Power English™ Fees

TOEIC FAST TRACK

Start Dates

22 Jan, 26 Mar, 16 Jul, 05 Nov (4 week course)

Fees

Refer to Power English™ Fees

TOEFL FAST TRACK

Start Dates

21 May, 10 Sep, 19 Nov (8 week course)

Fees

Refer to Power English™ Fees

OTHER PROGRAMS @ ACE PERTH

WORKIT™

Fees

\$495*

Min Booking

4 weeks

NOTE: 1. ACE's Study + Work program. (Includes 1 x guaranteed job offer)
2. Does not include ACE tuition + admin fees.
3. Not available to Tourist Visa holders

Teachers' Courses

ENGLISH FOR TEACHING CHILDREN

Start Dates (5 wks)

02 Jan, 21 May, 08 Oct

Fees

5 Weeks \$1,900 (Plus materials fee \$60 & 1 school visit \$100)

ENGLISH FOR TEACHING TEENAGERS

Start Dates (5 wks)

05 Feb, 25 Jun, 12 Nov

Fees

5 Weeks \$1,900 (Plus materials fee \$60 & 1 school visit \$100)

ENGLISH FOR TESOL (10 WEEKS)

TESOL Language Module (5 wks)

Start Dates	Fees
12 Mar, 30 Jul	\$2,400

TESOL Skills Module (5 wks)

Start Dates	Fees
16 Apr, 03 Sep	\$2,400

NOTE: Fees include materials

Teaching Knowledge Test (TKT)

Dates	Fees
19 May, 06 Oct	\$65 Per module x 3

3 STEPS TO TESOL

20 Week program comprising:

- English for Teaching Children • English for Teaching Teenagers • English for TESOL • TKT

Start Dates (20 wks)

02 Jan, 21 May

Fees

20 Weeks \$8,920 (Includes Free TKT)

Note: Entry into all courses except Power English™ (General English) is conditional on completion of the appropriate ACE entry test, or equivalent.

*Indicates that a course is not available to Student Visa holders. * These fees are inclusive of GST (10% Tax)

Australian College of English 2007

Administration and Accommodation Fees 2007

	SYDNEY	PERTH	BRISBANE	CAIRNS
Enrolment Fee	\$200	\$200	\$200	\$200
Airport Transfer*	\$121	\$99	\$99	\$88
Accommodation Placement*	\$198	\$198	\$198	\$198
Homestay (single)	\$230pw	\$200pw	\$200pw	\$200pw
Homestay (extra nights)	\$35	\$30	\$30	\$30
Homestay (under 18)	\$250pw	\$220pw	\$220pw	\$220pw
Carer Fee	\$50pw	\$30pw	\$30pw	\$30pw
Accommodation Amendment fee [‡]	\$80	\$80	\$80	\$80
Cambridge Retreat*	\$110	\$110	\$110	\$110
Hostel/Apartment rates	Please refer to the relevant accommodation pages on the ACE website: http://www.ace.edu.au/taccmmdn.htm			
Materials (1-4 weeks)*	\$70	\$70	\$70	\$70
Materials (5-12 weeks)*	\$120	\$120	\$120	\$120
Materials (13-24 weeks)*	\$160	\$160	\$160	\$160
Materials (25-35 weeks)*	\$180	\$180	\$180	\$180
Materials (36+ weeks)*	\$195	\$195	\$195	\$195
Workit fee*	\$495	\$495	\$495	\$495
Childcare Work Placement**	\$250	\$250	\$250	\$250
Academic Counselling & Placement	Free	Free	Free	Free
Internet, E-mail, DVD	Free	Free	Free	Free

*These fees are inclusive of GST (10% tax)

[‡] This fee applies to all changes made to accommodation bookings after the commencement of the course.

** Only available to students studying English for Teaching Children, English for Teaching Teenagers or 10 week TESOL course.

Exam Fees and Dates 2007

EXAM	FEES	DATES
PET	A\$220	17 Mar, 01 Jun, 07 Dec
FCE	A\$330	10 Mar, 12 Jun, 11 Dec
CAE	A\$335	10 Mar, 13 Jun, 12 Dec
CPE	A\$340	14 Jun, 13 Dec
LCCI	A\$260	Exams take place the last day of the 8-week course. (Refer to specific campus for dates)
TKT	A\$65 Per module x 3	Brisbane/Sydney 10 Mar, 19 May, 28 Jul, 06 Oct, 15 Dec Perth/Cairns 19 May, 06 Oct

NOTE: FCE and CAE exams take place on 10 March 2007, meaning students will not be able to 'double-enter' for both these exams.

Student Visa Holders

Student Visa Government Tax \$25

All overseas students studying in Australia on a Student Visa are required by the Australian government to obtain OSHC (Overseas Student Health Cover) medical insurance. This fee will be added to your invoice.

1-3 months	\$88	8 months	\$233
4 months	\$117	9 months	\$262
5 months	\$146	10 months	\$291
6 months	\$175	11 months	\$320
7 months	\$204	12 months	\$349

ACE AirLink

Students who are studying at ACE for 20+ weeks, and who wish to study in more than one city, can benefit from the ACE AirLink option. The ACE AirLink entitles ACE students to one free (single) flight transfer between Sydney, Brisbane, Cairns or Perth. Enquire at ACE for more details.

Notes:

1. Airlink is only available to students studying for 20 or more weeks.
2. Students must study a minimum of 4 weeks at each ACE campus and need to give 5 weeks notice of their intended transfer
3. Air tickets will be booked by ACE.

Public Holidays in 2007

ACE is closed on official public holidays, on 09 Nov and from 24 Dec to 28 Dec inclusive.

NSW: 01 Jan, 26 Jan, 06 Apr, 09 Apr, 25 Apr, 11 Jun, 06 Aug, 01 Oct

WA: 01 Jan, 26 Jan, 05 Mar, 06 Apr, 09 Apr, 25 Apr, 04 Jun, 01 Oct

QLD: 01 Jan, 26 Jan, 06 Apr, 09 Apr, 25 Apr, 07 May, 11 Jun, 15 Aug

Payments

Students can make payment by:

1. International Bank Cheque payable to 'Australian College of English'. Personal cheques are not accepted.
2. Direct Deposit:
 - Account Name: Australian College of English Pty Ltd
 - Account Number: 773817
 - Branch number: 036-000
 - Bank Name: Westpac Banking Corporation
 - Bank Address: 109 St Georges Terrace,
Perth WA 6000,
Australia
 - SWIFT Code: WPACAU2S
 - Note: If payment is made by direct deposit, please ensure your name and student number are included in the transaction and a copy of the bank receipt is faxed to the Admissions Manager on +61 2 9389 6880.
3. Credit Card (see Enrolment Form part 2)